

About Assumption Court

Our 59-unit facility provides senior (55+) housing with services apartments within a convenient and comfortable setting on the Assumption Campus. Adjacent to Assumption Home, this facility provides housing in a safe and secure environment complemented by courteous, friendly, 24-hour staff for emergency response. We are senior housing with services with an assisted living designation. Assumption Court is tobacco free. Our leases are month-to-month to offer flexibility.



Thinking about moving to Assumption Court?

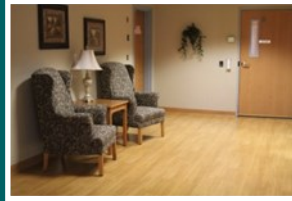
In order to ensure that older adults know their options, the Minnesota State Legislature made the requirement that you must first call the Senior LinkAge Line (1.800.333.2433) for housing options counseling. They can help you find services to meet your needs while living in your home. Following this call, you will receive a **verification number** for your Application for Admission. **We need this number to legally enter into a Lease Agreement.**



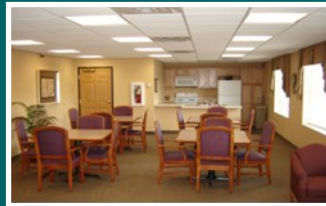
Assumption Community
Assumption Court

Assumption Court Photo Gallery

Convenient link to Assumption Home and John Paul Apartments.



Generations Room. Get the whole family together and have some fun!



Elegant Dining room.
Three meals a day, served in style.



There's more...read in the library, workout in our exercise room, lounge by the fireplace, get your hair done in the Beauty Shop, and shoot some pool in the Boulder Room.

Assumption Court Apartments

Assisted Living
Senior Housing with Services



615 First Street North
Cold Spring, MN 56320

320.348.2350

www.assumptioncommunity.com



assumptioncommunity



Assumption Community
Welcome Home

Standard Apartment

Our apartments include: kitchen, living room, bedroom(s), bath with walk-in shower and walk-in closets.

Monthly Rental Rates
Call us at 320.348.2350

- 1 Bedroom:
656 sq. ft.
- 2 Bedrooms:
840 sq. ft.



Premium Apartment

Each apartment is spacious for family and friends. There are various floor plans to choose from and exceptional views.

Monthly Rental Rates
Call us at 320.348.2350

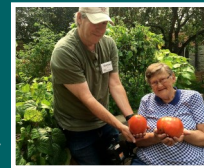
- 1 Bedroom:
716–746 sq. ft.
- 1 Bedroom with Den:
912 sq. ft.
1,047 sq. ft.
- 2 Bedrooms/2 Baths:
1,024 sq. ft.

**Security Deposit due at
Lease Signing**

Apartment Features

- Secured Entrance Intercom
- Emergency Wall Pendant System
- Tobacco Free
- 24 Hour Staffing for Emergency Response
- Air Conditioning
- On Site Washers & Dryers
- Individual Storage Space
- Access to Medical and Therapeutic Services
- Outdoor Picnic Area, Gardening and Walking Path
- Community Outings
- Heat/Water/Trash

Premium Apartments Include:
In-Unit Washer and Dryer
Dishwasher
Microwave
Central Air
Extra Closet Space



Campus Amenities Include:
Daily Scheduled Activities
Social Events
Spiritual Care
Beauty Shop
Fitness Classes

Added Amenities

Call us for pricing at 320.348.2350

Meal Service

Heated Indoor Garage

Guest Suite

Assumption Health Services

Assumption Court Apartments are registered by the State of Minnesota as Housing with Services establishment. You may live in your apartment independently or choose to incorporate a variety of Health Services, which are provided in the comfort of your apartment.



Recommended services are discussed during the initial assessment with our Health Services RN. Assumption Health Services is licensed by the State of MN to provide Comprehensive Home Care.

For more information please contact:
Assumption Health Services: 320.685.4110