

## About John Paul Apartments

We are pleased to share with you, information about John Paul Apartments. John Paul Apartments is a senior living community that offers fine living at an affordable price. This 61-unit facility provides customized living and senior (62+) housing apartments within a convenient and comfortable setting. Located within the Assumption Campus, and adjacent to Assumption Home, this facility provides housing in a safe and secure environment complemented by courteous, friendly, 24-hour staff. John Paul Apartments was designed to offer privacy and independence. John Paul is a smoke-free building. Our leases are month-to-month to offer flexibility.

### Thinking about moving to

### John Paul Apartments?

In order to ensure that older adults know their options, the Minnesota State Legislature made the requirement that you must first call the Senior LinkAge Line (1-800-333-2433) for long-term care options counseling. They can help you find services to meet your needs while living in your home. Following this call, you will receive a verification number for on your Application for Admission. We are not legally able to enter into a lease agreement without this number!

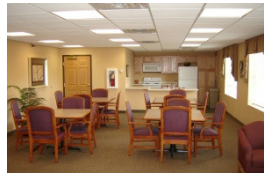
Visit us at [www.assumptionhome.org](http://www.assumptionhome.org) for more pictures and floor plans!

## John Paul's Photo Gallery

*Convenient link to Assumption Home and Assumption Court Apartments.*



*Party Room. Get the whole gang together and have some fun!*



*Front Lobby Lounge.*

*Sip on some coffee, read the paper, and socialize with other tenants!*



*Beauty Shop.*

*Look wonderful right here without leaving!*



*There's more...read in the Library, visit while doing laundry, and shoot some pool & puzzles for fun!*



## John Paul Apartments Senior Housing with Services

### Rental Information



**John Paul Apartments**  
200 8<sup>th</sup> Avenue North  
Cold Spring, MN 56320

**Phone: 320.685.3693**  
[www.assumptionhome.org](http://www.assumptionhome.org)

## Apartment Information

John Paul Apartments were established in 1980. The apartments are perfect for clients who are looking to move into a smaller but safer environment. John Paul has one and two bedroom apartments. Call for a tour today!

## Monthly Rental Rates

John Paul Apartments offer income-based rent under HUD's (Housing for Urban Development) Section 8/202 housing guidelines. Income limits do apply to this program. Please complete the enclosed application paperwork in its entirety. Proof of reported income, assets, and expenses is required. If proof is not provided, John Paul Apartments will obtain third party verification. All information provided in the application or otherwise obtained will remain confidential.

## Security Deposit at Lease Signing

- Based on calculated rent.



## Apartment Features

- Complete Kitchen
- Living Room
- Bedroom(s)
- Full Bath
- Ample Closet Space
- On Site Washer & Dryer
- Entrance Intercom System
- Emergency Pendant System
- I'm OK Program
- 24 Hour Staffing
- Office Manager & Residential Service Coordinator
- Access to Medical and Therapeutic Services
- Teals Market Outing/Delivery
- Heat
- Water
- Trash Removal

## Campus Amenities Include

- Activity Programming
- Social Events
- Beauty Shop
- Gift Shop

## Elective Amenities

### Meal Service:

Breakfast: \$4.75 per meal  
Lunch & Supper Meals: \$6.75 per meal

### Cable TV:

\$21.90 per month

### Heated Indoor Garage:

\$55.00 per month

### Guest Suite:

\$50.00 per night



## Assumption Health Services

For over 50 years, Assumption Community has been providing a continuum of Health and Residential services for area seniors.

We believe in providing a system of care that allows tenants to "age-in-place" by bringing services to every apartment. Tenants are allowed to live an independent lifestyle and add services as needed.

Charges for Home Care vary depending on the frequency and types of services provided. Recommended services are discussed during the initial assessment with the Home Care RN.

For more information please contact our Assumption Health Services: 320-685-4110